

01 — STRATEGIC FACTS  
About  
SCZONE

# SCZONE Facts

**455** KM<sup>2</sup>  
TOTAL AREA

**100**K  
DIRECT & INDIRECT JOBS

**6**  
SEA MAIN PORTS

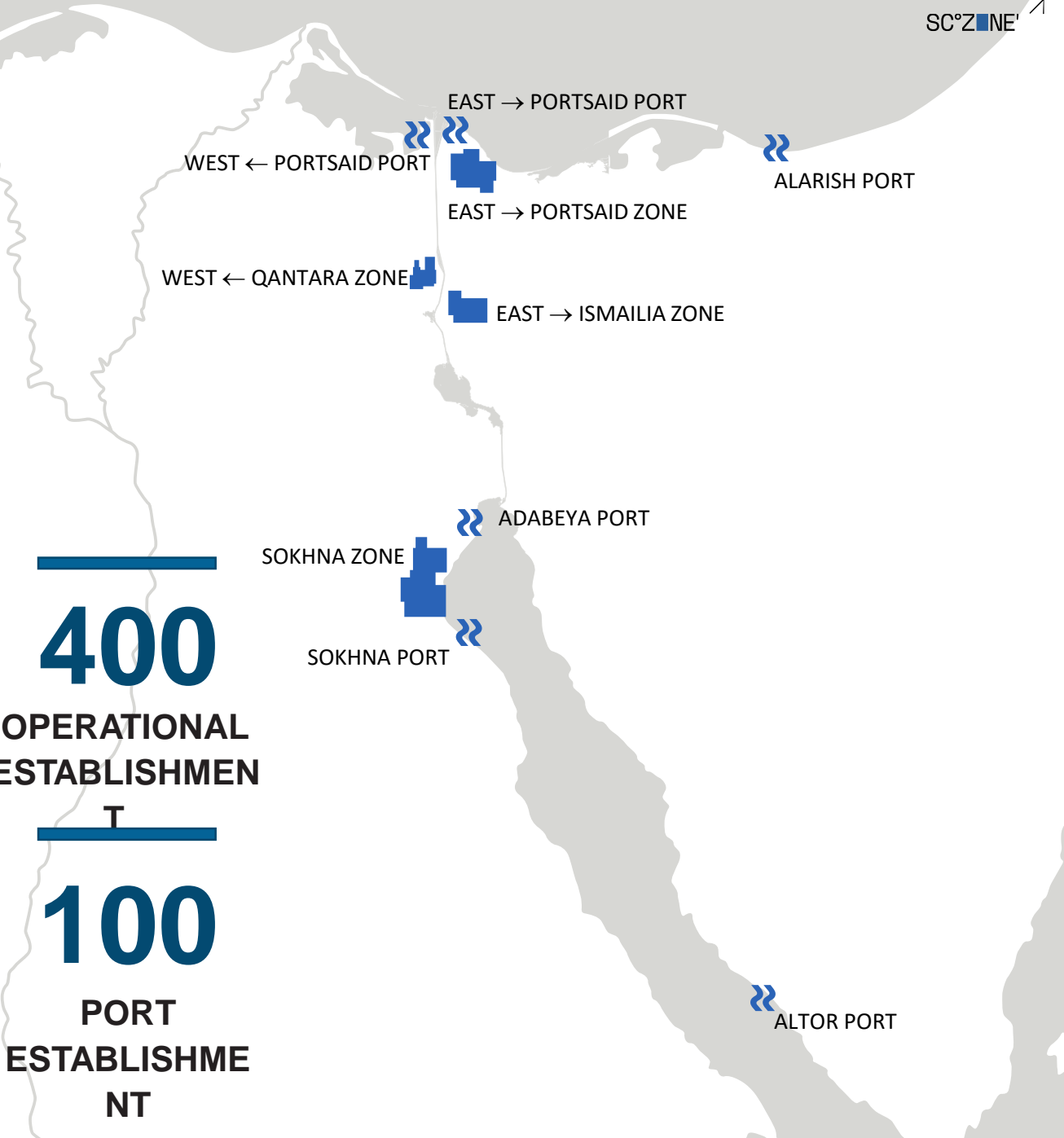
**5**  
MAIN PORTS OPERATORS

**4**  
INDUSTRIAL ZONES

**14**  
INDUSTRIAL DEVELOPERS

**400**  
OPERATIONAL ESTABLISHMENTS

**100**  
PORT ESTABLISHMENTS



## Strategic Location

A promising investment destination comprising 4 industrial zones & 6 sea ports, around the main global maritime trade route (Suez Canal), passing through it:

# 12%

INTERNATIONAL  
TRADE

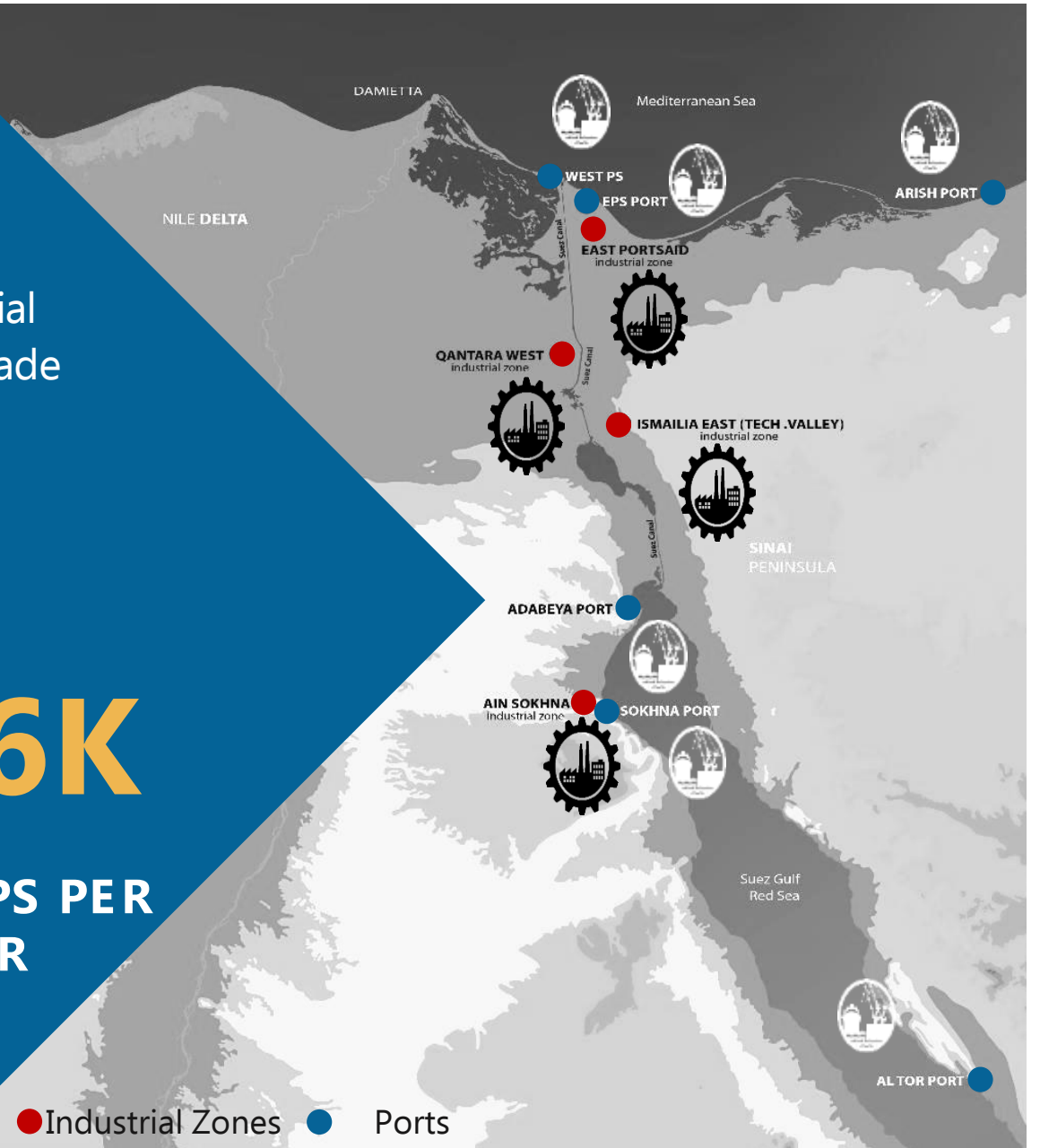
# 10%

SEABORNE  
TRADE

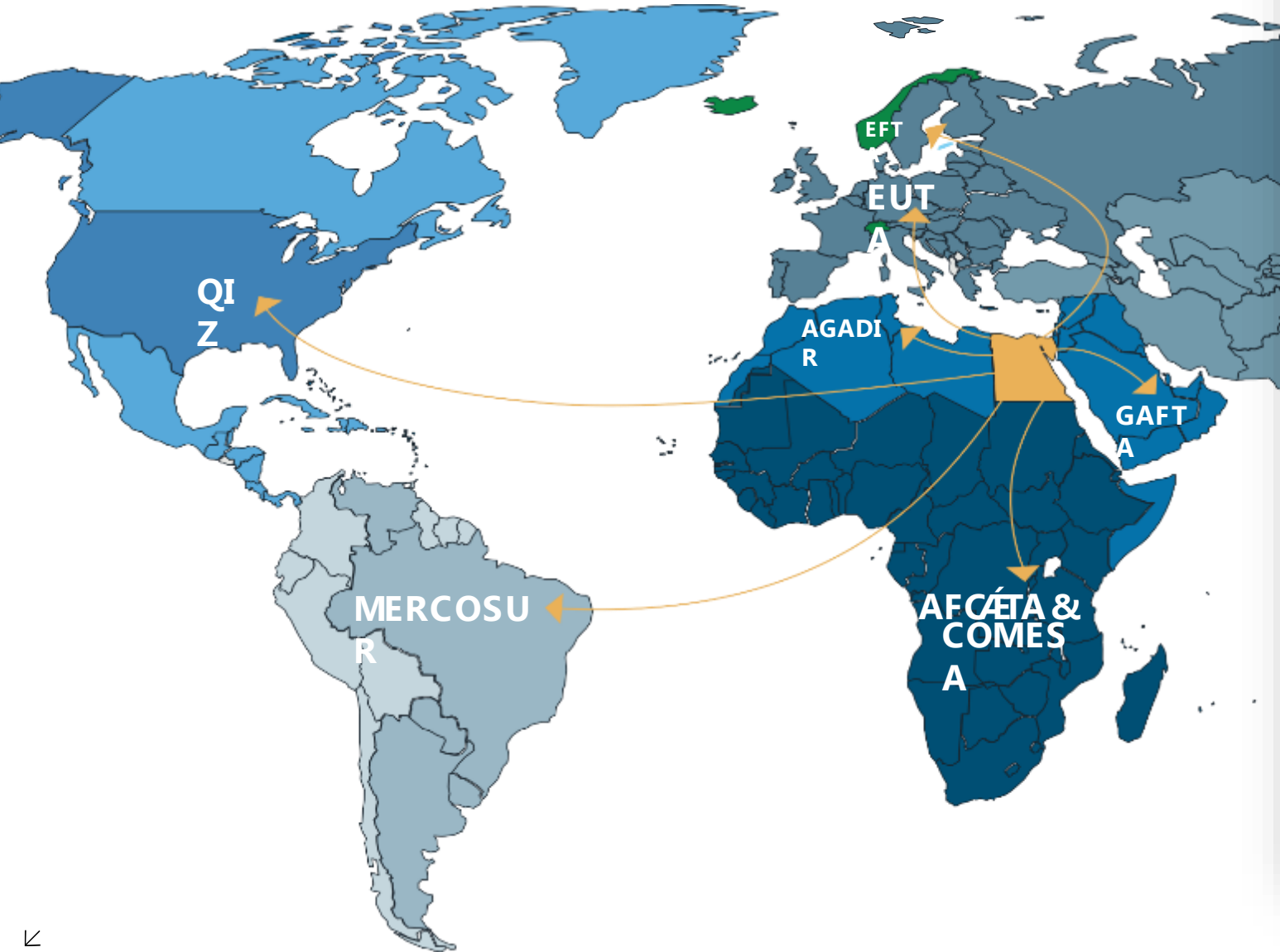
# 26K

SHIPS PER  
YEAR

● Industrial Zones ● Ports



# Markets Accessibility



100

% CUSTOMS EXEMPTION

With Free Trade Agreements

100M

n CONSUMERS

Accessing a promising domestic market in Egypt

2B

n CONSUMERS

Accessing a promising international market benefiting from multiple free trade agreements



# ADABEYA Port

Located at the northern end of the Gulf of Suez, 17 km away from Suez City



**1.6** km<sup>2</sup>

Total Area

**7**  
**650**m

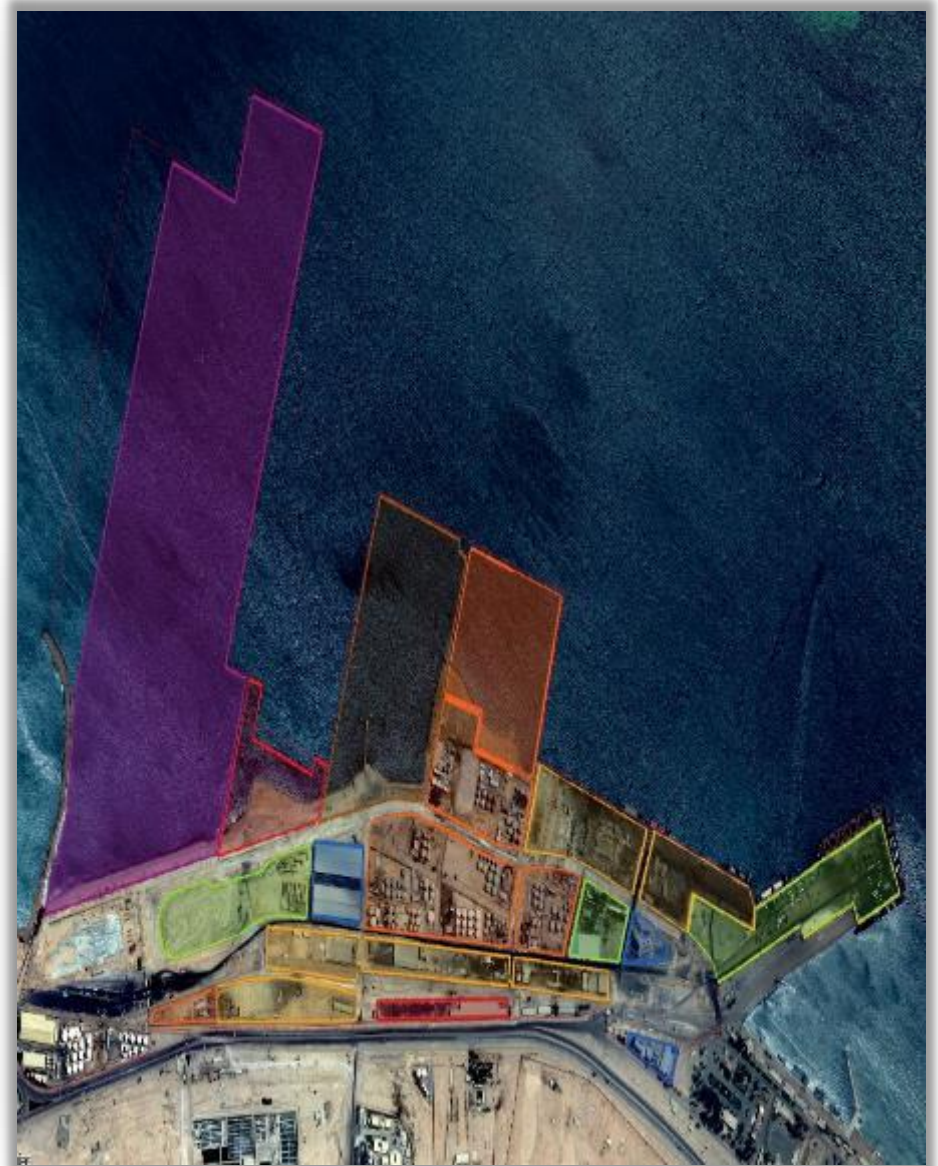
Turning Circle

**1.4** km

Quay Length

**9-14**m

Port Depth



# EAST PORTSAID Port



Located alongside the Suez Canal, with sheltered deep water facilities capable of accommodating very large vessels



<b>9.5</b> km <sup>2</sup>	<b>5</b> km	<b>18</b> m	<b>27</b> km <sup>2</sup>
—	—	—	—
<b>Total Area</b>	<b>New Quay</b>	<b>Port Depth</b>	<b>Logistics Area</b>

# Utilities and Infrastructure

**\$2.8B**



## NATURAL GAS

1 PRESSURE REDUCTION UNIT & PIPELINE NETWORK



## COMMUNICATION

3 COMM. CENTRAL & FIBER OPTICS CABLES



## POWER SUPPLY

7 POWER SUB-STATION

13 POWER DISTRIBUTOR



## SEWAGE TREATMENT

2 TREATMENT PLANT & PIPELINES

6 SEWAGE TREAT. COMPACT UNITS



## WATER SUPPLY

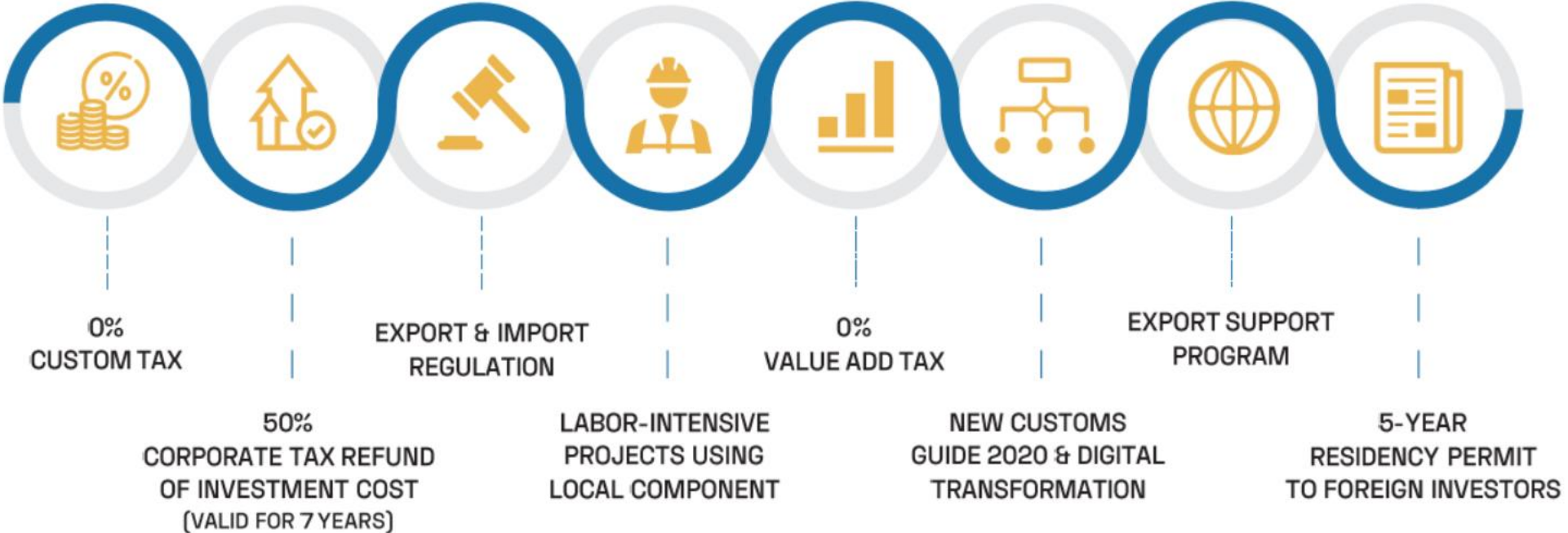
2 SEA WATER DESALINATION PLANT

3 WATER LIFT PLANT & STORAGE



# INVESTMENT INCENTIVES HIGHLIGHTS

## “RICH & STIMULATING WORK ENVIRONMENT”



## Incentives

ONE

STOP

SHOP

SCZONE's One-Stop-Shop is a unique business model, creating an ideal business environment through:

- Facilitation of all services required for projects startup effectively & efficiently
- Simplification of procedures and documents
- Elimination of bureaucracy through more streamlined procedures
- Minimization of administrative and financial burdens
- Digitalization of E-Services will be "LIVE" during the 1<sup>st</sup> half of 2024



# REGIONAL INTEGRATED PALM OIL COMPLEX HIGHLIGHTS

Currently, Indonesia controls 80% of Egypt Palm Oil annual Imports totaling 1 million tonnes

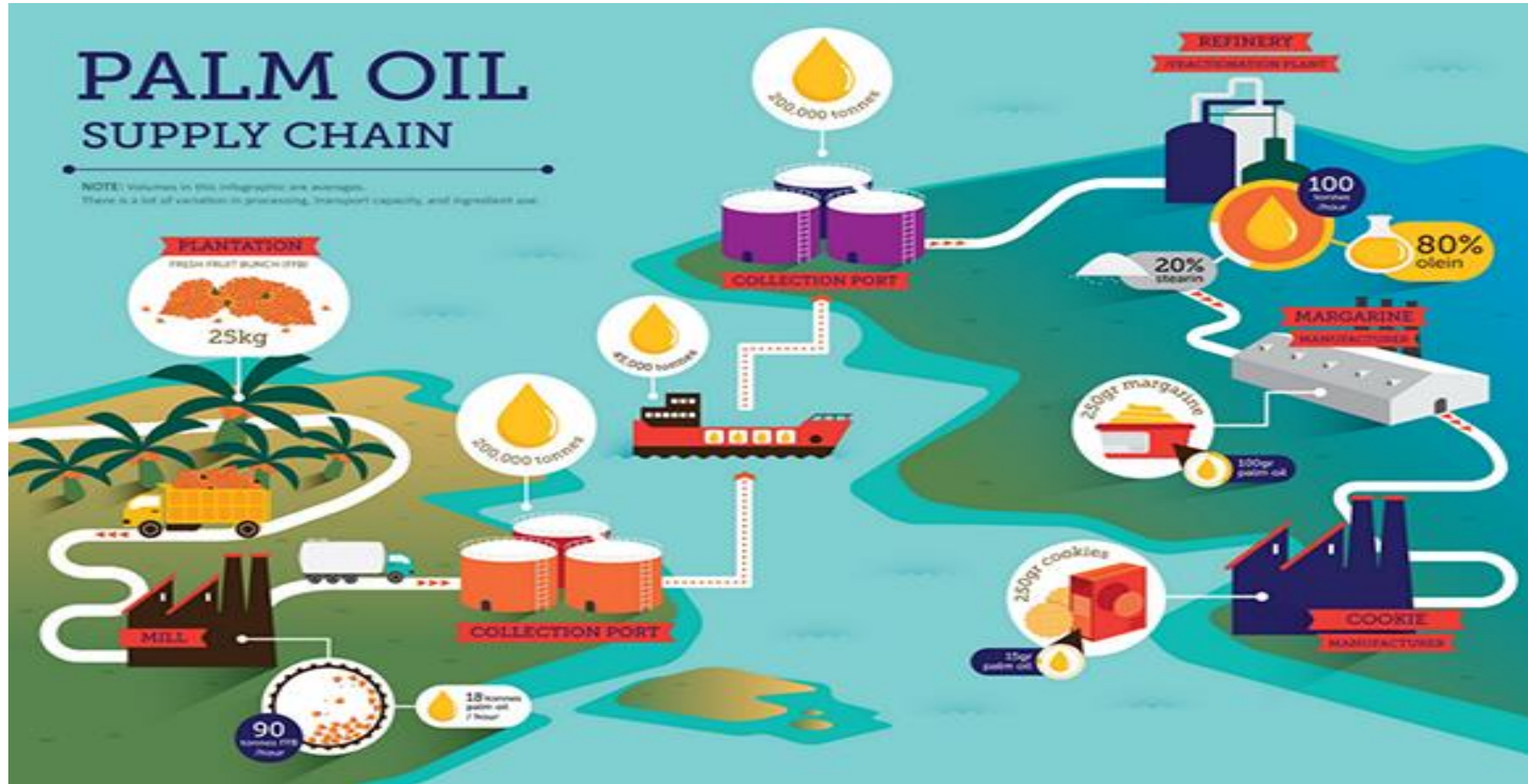
Capitalizing on Egypt's unique geographic location the establishment of the proposed Regional Integrated Supply Chain would remarkably increase the Indonesian Palm Oil profit margins, for exports to the neighboring countries.

Given the fact that the total MENA Region Imports of Palm Oil is in the vicinity of 2.5 million tonnes p.a.,

## Investment Opportunity Highlights:

- Establishing a Joint Venture Company for the design – build – own & operate an Integrated Palm Oil Complex, between Egyptian & Indonesian Companies.
- Building a Value Added Hub for Crude Palm Oil “CPO” (Midstream & Downstream), targeting both the Local Market as well as the MENA Region.
- In addition to the Investment Incentives Package that the SCZone is providing to its' investors, the Government of Egypt might study the Possibilities for introducing a Production-Linked Investment Incentives for furthermore enhance the profit margins of the Complex.

# REGIONAL INTEGRATED PALM OIL COMPLEX





# THANK YOU

“ INTEGRATED ROUTE .. ONE DESTINATION ”

SC°Z NE!

المنطقة الاقتصادية  
القناة السويسية  
SUEZ CANAL ECONOMIC ZONE